



# Auto-Pak<sup>®</sup> Container Packers

## 1830 SERIES



1830-2000



1830-3005



1830-4000

\*Photos may contain optional equipment

### 1830-2000

A full-size trash compactor equipped with a 5 HP power unit for high volume applications.

### 1830-3005

Short bodied trash compactor capable of displacing up to 65 yd 3/hr. Removable hopper allows for a variety of options.

### 1830-4000

A space-saving design, for trash rooms where the shortest container packer is required.

### 1830-Standard

A full-size compactor, equipped with a 1 HP power unit for smaller buildings.

### 1830-3001

Similar to the 1830-3005, except it is equipped with a 1 HP power unit capable of displacing up to 24 yd 3/hr.

The Auto-Pak 1830 Series are fully automatic, hydraulically operated trash compactors capable of displacing up to 65 cubic yards per hour. With multiple sizes, fixtures, and options, you will find an Auto-Pak 1830 machine available for any trash room.

A photo-electronic sensor starts the compaction cycle when refuse enters the hopper and turns the machine off when the hopper is empty. The trash compactor automatically shuts off if an uncrushable object is encountered. An unload light is provided to signal a full container. A service access door is provided in the hopper, equipped with an electronically interlocked safety switch which prevents the machine from operating if the access door is open. An emergency stop button is provided for safety.

Compactors are compatible with various front and rear load compaction container sizes.



635 Hay Street, York, PA 17403

[precisionmachinerysystems.com](http://precisionmachinerysystems.com)

717-846-6800 | [info@PrecisionMachinerySystems.com](mailto:info@PrecisionMachinerySystems.com)





# 1830 Series Specifications

	Standard	2000	3001	3005	4000
Chamber Capacity	7.0 cf	7.0 cf	8.0 cf	8.0 cf	N/A
Compaction Force (M)	12,090 lbs	17,580 lbs	7,850 lbs	19,625 lbs	13,815 lbs
Top Opening Throat	22" L x 30" W	22" L x 30" W	26" L x 30" W	26" L x 30" W	23" L x 30" W
Ram Face Pressure (M)	22.00 psi	32.77 psi	14.5 psi	36.3 psi	14.50 psi
Volume Displacement	15.6 cy/hr	43.4 cy/hr	24.0 cy/hr	65.0 cy/hr	N/A
Cycle Time	44 seconds	22 seconds	57 seconds	17 seconds	50 seconds
Size, without container (L x W x H)	71 x 40 x 68 in	71 x 40 x 68 in	50 x 40 x 68 in	50 x 40 x 68 in	54 x 44 x 75 in
Weight, without container	1,500 lbs	1,600 lbs	1,450 lbs	1,550 lbs	950 lbs
Motor Horsepower	1 HP	5 HP	1 HP	5 HP	1 HP
Motor Voltage	115/208/230 V, 1Ph	208/230/460 V, 3Ph, 4 Wire	115/208/230 V, 1Ph	208/230/460 V, 3Ph, 4 Wire	115/208/230 V, 1Ph
Motor Full Load Amps (FLA)	14.0/7.1/7.0 A	14.9-13.4/6.7 A	14.0/7.1/7.0 A	14.9-13.4/6.7 A	14.0/7.1/7.0 A
Hydraulic Pump	1-Stage, 2.4gpm	1-Stage, 6gpm	1 Stage, 2.4gpm	1-Stage, 6gpm	1-Stage, 2.4 gpm
Cylinder Bore Diameter	3.5"	3.5"	(2) 2.5"	(2) 2.5"	4"
Control System, Fused, AC	115V	115V	115V	115V	115V

## Standard 1830 Series Options

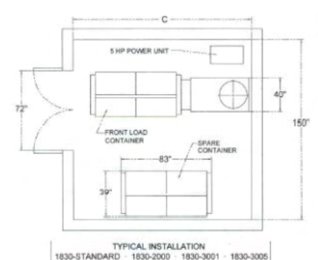
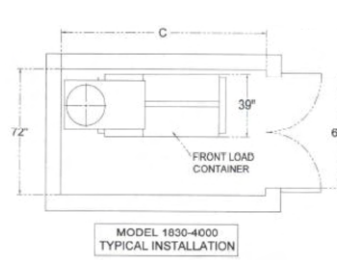
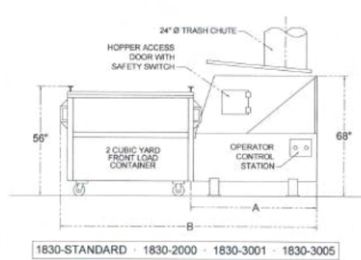
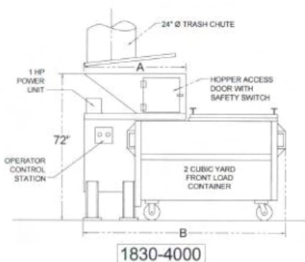
- \*Hopper Flare & Extensions
- \*One-Side Container Attachment
- \*Dual Sided Handing
- \*Heavy Duty Options
- \*PLC Package
- \*UL Labeled Control Panel Package
- \*ANSI Z245.2-2008 Package
- \*Excessive Run Timer
- \*Keyed on/off Switch
- \*Control Transformer
- \*Deodorizer
- \*Sound Dampening

\*Additional options/customizations available upon request

## 1830 Series Dimensions

	Standard	2000	3001	3005	4000
Dim "A" – Machine Length without Container	72-1/2"	72-1/2"	50"	50"	51"
Dim "B" – Machine Length with Front Load Container	147"*	147"*	125"*	125"*	102"*
Dim "C" – Room Length Minimum with Front Load Container	159"*	159"*	137"*	137"*	114"*

\*Note: For Rear Load Containers, Subtract 7"



Due to continual product improvement PRECISION MACHINERY SYSTEMS reserves the right to change specifications without notice. The information and pictures used in the document are for illustrative purposes only.



635 Hay Street, York, PA 17403

[precisionmachinerysystems.com](http://precisionmachinerysystems.com)

717-846-6800 | [info@PrecisionMachinerySystems.com](mailto:info@PrecisionMachinerySystems.com)

